

CHERRY HEIGHTS SHOPPING CENTER

NOW LEASING IN THE DALLES, OREGON



LOCATION

Cherry Heights Rd & Mount Hood St
in The Dalles, Oregon

AVAILABLE SPACE

2,800 SF (Divisible)

ASKING RENT

Please call for details

HIGHLIGHTS

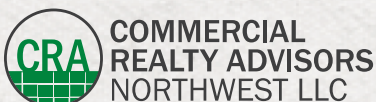
- Located in the commercial center of The Dalles between Fred Meyer and Safeway.
- Other nearby traffic generators include MOD Pizza, Grocery Outlet, Staples, Petco, Rite Aid, Big 5 Sporting Goods, Dollar Tree, Walgreens, AT&T Wireless, Jo-Ann's, Home Depot, and a variety of restaurants.
- The center has easy access on and off I-84 and offers freeway visibility.

TRAFFIC COUNTS

I-84 - 13,365 ('18)

W 6th St - 9,103 ADT ('20)

Cherry Heights Rd - 5,054 ADT ('20)



COMMERCIAL
REALTY ADVISORS
NORTHWEST LLC

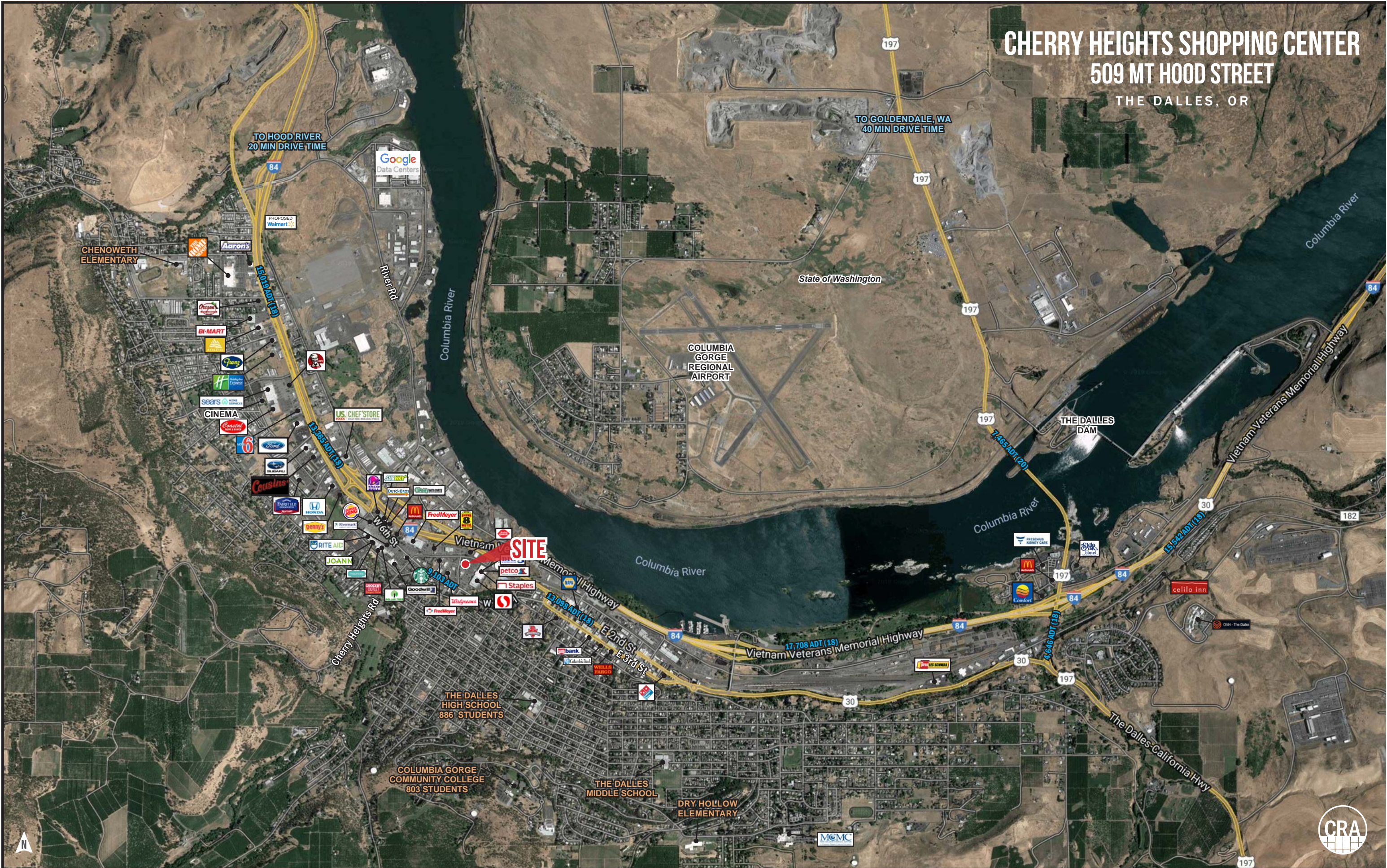
Jeff Olson 503.957.1452 | jeff@cra-nw.com

Kelli Maks 503.680.3765 | kelli@cra-nw.com

503.274.0211

www.cra-nw.com

CHERRY HEIGHTS SHOPPING CENTER 509 MT HOOD STREET THE DALLES, OR



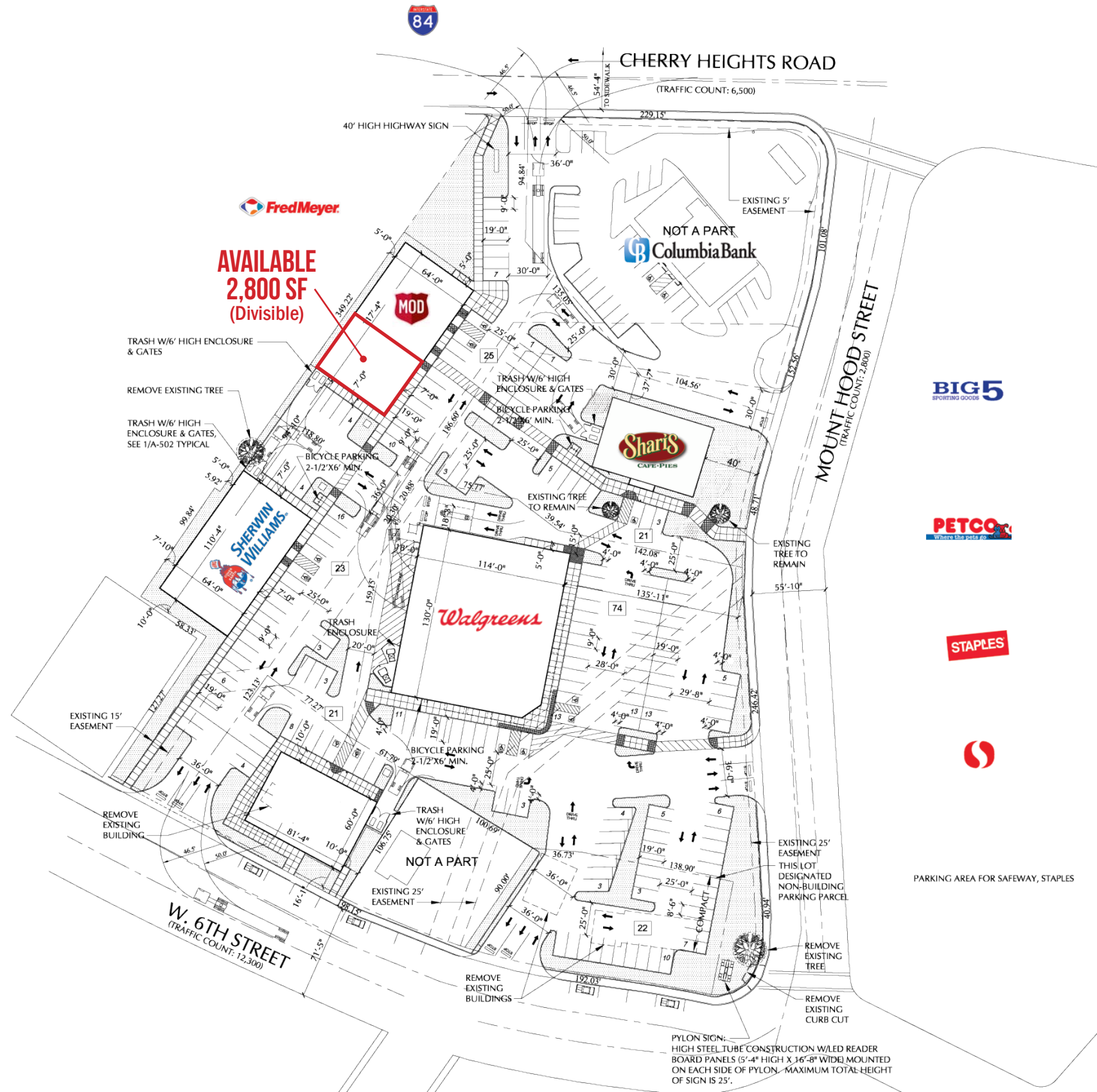
CHERRY HEIGHTS SHOPPING CENTER 509 MT HOOD STREET THE DALLES, OR



CHERRY HEIGHTS SHOPPING CENTER 509 MT HOOD STREET THE DALLES, OR

SITE PLAN

FredMeyer



CHERRY HEIGHTS SHOPPING CENTER 509 MT HOOD STREET

CONCEPTUAL PLAN

THE DALLES, OR



CHERRY HEIGHTS SHOPPING CENTER 509 MT HOOD STREET

DEMOGRAPHIC SUMMARY

THE DALLES, OR

Source: Regis - SitesUSA (2020)	1 MILE	3 MILE	5 MILE
Estimated Population 2020	6,195	19,160	21,591
Average HH Income	\$71,328	\$74,425	\$74,086
Median HH Income	\$57,316	\$60,464	\$61,008
Median Home Value	\$193,915	\$191,999	\$196,451
Daytime Demographics 16+	7,629	17,025	18,618

37.8

Median Age
1 MILE RADIUS



SUMMARY PROFILE

2000-2010 Census, 2020 Estimates with 2025 Projections

Calculated using Weighted Block Centroid from Block Groups



Lat/Lon: 45.6051/-121.1961

RS1

Cherry Heights Shopping Center

The Dalles, OR 97058

1 mi radius 3 mi radius 5 mi radius

	1 mi radius	3 mi radius	5 mi radius	
POPULATION	2020 Estimated Population	6,195	19,160	21,591
	2025 Projected Population	6,487	20,042	22,601
	2010 Census Population	5,782	17,834	20,075
	2000 Census Population	5,331	16,747	18,944
	Projected Annual Growth 2020 to 2025	0.9%	0.9%	0.9%
	Historical Annual Growth 2000 to 2020	0.8%	0.7%	0.7%
	2020 Median Age	37.8	38.4	39.0
HOUSEHOLDS	2020 Estimated Households	2,553	7,608	8,583
	2025 Projected Households	2,606	7,763	8,764
	2010 Census Households	2,382	7,083	7,979
	2000 Census Households	2,168	6,657	7,488
	Projected Annual Growth 2020 to 2025	0.4%	0.4%	0.4%
	Historical Annual Growth 2000 to 2020	0.9%	0.7%	0.7%
RACE AND ETHNICITY	2020 Estimated White	86.4%	85.3%	85.5%
	2020 Estimated Black or African American	1.2%	1.0%	1.0%
	2020 Estimated Asian or Pacific Islander	1.6%	2.0%	2.0%
	2020 Estimated American Indian or Native Alaskan	1.6%	1.5%	1.5%
	2020 Estimated Other Races	9.2%	10.1%	10.1%
	2020 Estimated Hispanic	22.3%	21.6%	21.1%
INCOME	2020 Estimated Average Household Income	\$71,328	\$74,425	\$74,086
	2020 Estimated Median Household Income	\$57,316	\$60,464	\$61,008
	2020 Estimated Per Capita Income	\$29,714	\$29,837	\$29,741
EDUCATION (AGE 25+)	2020 Estimated Elementary (Grade Level 0 to 8)	5.3%	5.3%	5.2%
	2020 Estimated Some High School (Grade Level 9 to 11)	7.0%	8.3%	8.4%
	2020 Estimated High School Graduate	27.5%	29.2%	29.0%
	2020 Estimated Some College	27.4%	25.5%	25.1%
	2020 Estimated Associates Degree Only	10.7%	10.8%	11.1%
	2020 Estimated Bachelors Degree Only	15.4%	13.1%	13.2%
	2020 Estimated Graduate Degree	6.7%	7.8%	8.1%
BUSINESS	2020 Estimated Total Businesses	703	1,208	1,287
	2020 Estimated Total Employees	5,323	10,087	10,739
	2020 Estimated Employee Population per Business	7.6	8.4	8.3
	2020 Estimated Residential Population per Business	8.8	15.9	16.8

This report was produced using data from private and government sources deemed to be reliable. The information herein is provided without representation or warranty.

For more information, please contact:

JEFF OLSON 503.957.1452 | jeff@cra-nw.com

KELLI MAKS 503.680.3765 | kelli@cra-nw.com



KNOWLEDGE

RELATIONSHIPS

EXPERIENCE



**COMMERCIAL
REALTY ADVISORS
NORTHWEST LLC**

Licensed brokers in Oregon & Washington

 15350 SW Sequoia Parkway, Suite 198 • Portland, Oregon 97224



www.cra-nw.com



503.274.0211

The information herein has been obtained from sources we deem reliable. We do not, however, guarantee its accuracy. All information should be verified prior to purchase/leasing. View the Real Estate Agency Pamphlet by visiting our website, www.cra-nw.com/home/agency-disclosure.html. CRA PRINTS WITH 30% POST-CONSUMER, RECYCLED-CONTENT MATERIAL.